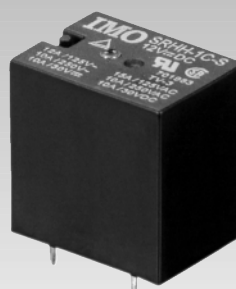
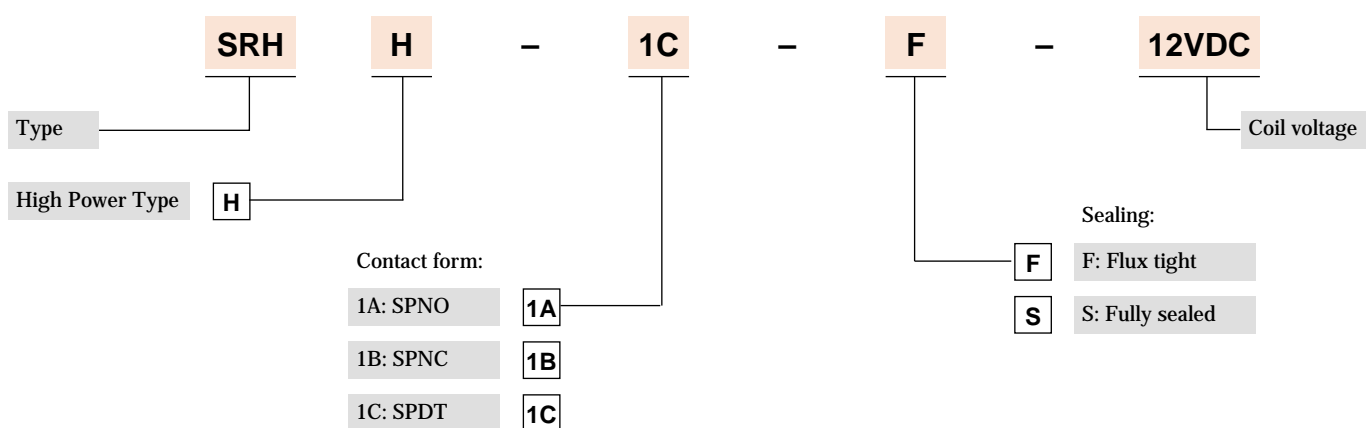


- High rating 15A 250 VAC/30 VDC
- Flux tight or fully sealed versions available
- TV-8 rating available
- UL/CSA/TUV recognised
- Reserved NC/NO contact footprint layout, available upon request



Options and ordering codes



Contact rating

Contact form	1A (SPNO)	1B, 1C
Maximum switching power	2400VA/300W	
Maximum switching voltage	250VAC/30VDC	
Maximum switching/carry current	15A	
TV rating	TV-8	TV-3

UL, CSA and TUV safety approval ratings available on request

Specifications

Contact material		AgSnInO
Initial contact resistance		50mΩ Max
Operate time		15ms Max (at rated voltage)
Release time		5ms Max (at rated voltage)
Nominal operating power		Approx. 360mW
Insulation resistance		100MΩ at 500VDC
Breakdown voltage	Between coil and contacts	1500VAC (for 1 minute)
	Between open contacts	750VAC (for 1 minute)
Vibration resistance	Operating extremes	10~50Hz, amplitude 1.0mm
	Damage limits	10~50Hz, amplitude 1.0mm
Shock resistance	Operating extremes	10G
	Damage limits	100G
Ambient temperature		-30~+60°C
Life expectancy	Mechanical	10 x 10 ⁶ operations (frequency 18,000 operations/hour)
	Electrical (at max load)	1 x 10 ⁵ operations (frequency 1,200 operations/hour)
Weight		16g

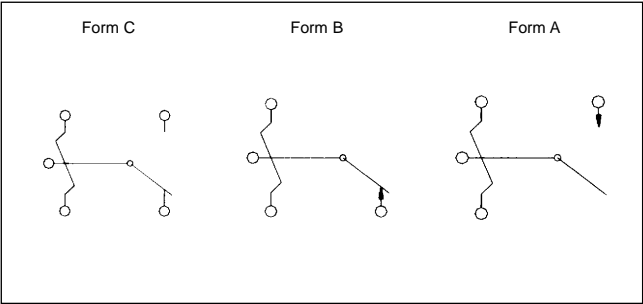
Coil specification SRH

Rated voltage	Rated Current ± 10% at 25°C (mA)	Coil Resistance ± 10% at 25°C (Ω)	Max continuous voltage at 25°C	Pick up voltage (Max) at 25°C	Drop out voltage (Min) at 25°C	Power consumption at rated load
3	120	25	130% of rated voltage	75% of rated voltage	10% of rated voltage	Approx. 360mW
5	73	69				
6	60	100				
9	40	225				
12	30	400				
24	15	1600				
48	7.5	6400				

Dimensions mm



Wiring diagram



PCB layout

